

☐ GREGORY L. COX RA
NJ AI09000 NY 016361-1

☐ JOHN C. AMELCHENKO RA
NJ AI10380



NEW RESIDENCE

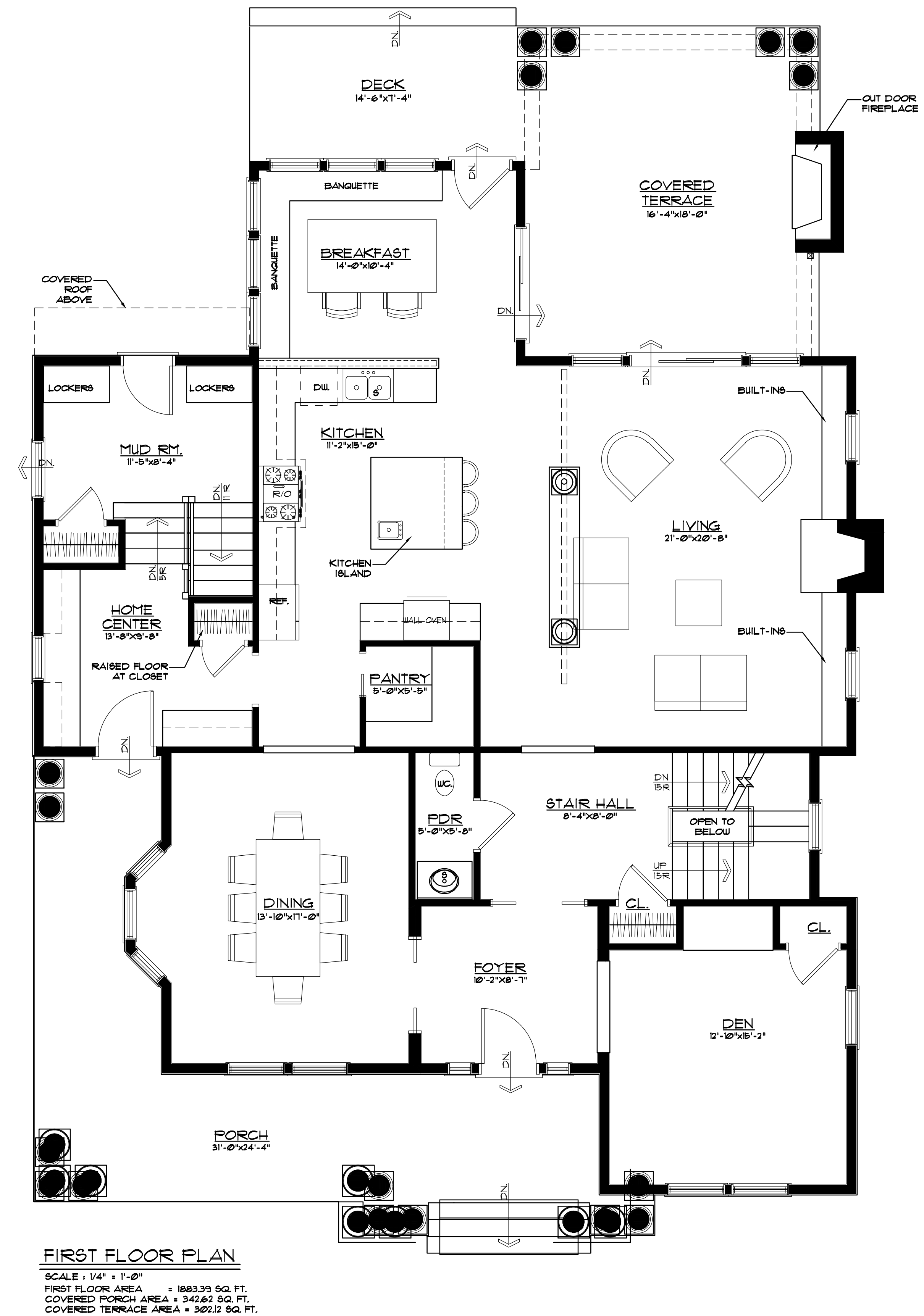
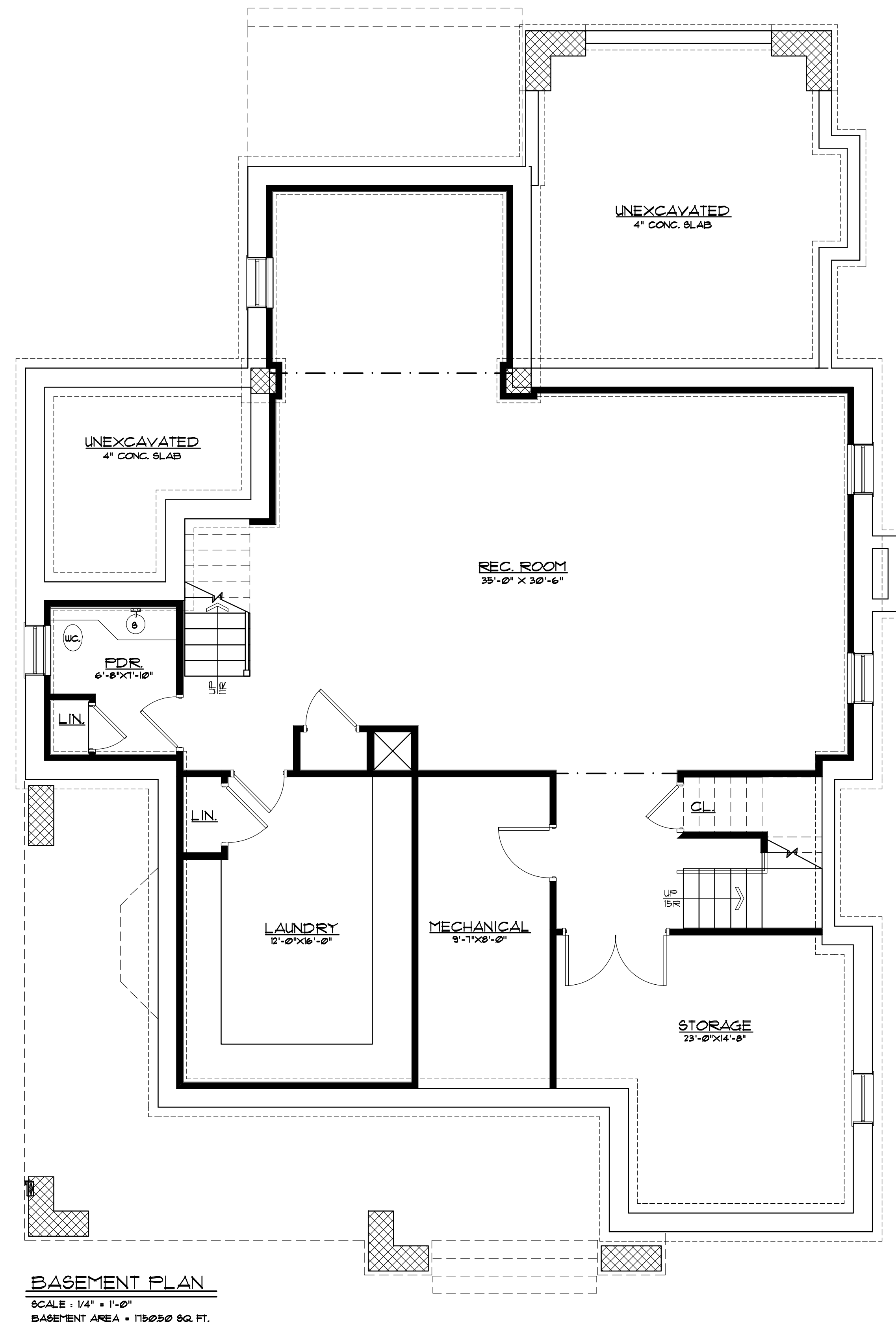
[illegible]

Aquatecture Associates Incorporated expressly reserves its common law copyright and other property rights in these plans. These documents are not to be reproduced, changed or copied in any form or manner whatsoever nor are they to be assigned to a third party without first obtaining the expressed written permission of Aquatecture Associates Incorporated.

DATE: 08/28/15
PROJECT # 15.46 C

$$CS = 1$$

OF 3



GREGORY L. COX RA
NJ A109000 NY 016361-1

JOHN C. AMELCHENKO RA
NJ A110380

AQUATECTURE
ASSOCIATES INCORPORATED
ARCHITECTS • PLANNERS
421 RIVER AVENUE • POINT PLEASANT BEACH • NEW JERSEY 08742
VOICE: 732-295-3692 • FAX: 732-892-8095 • WWW.AQUATECTURE.COM

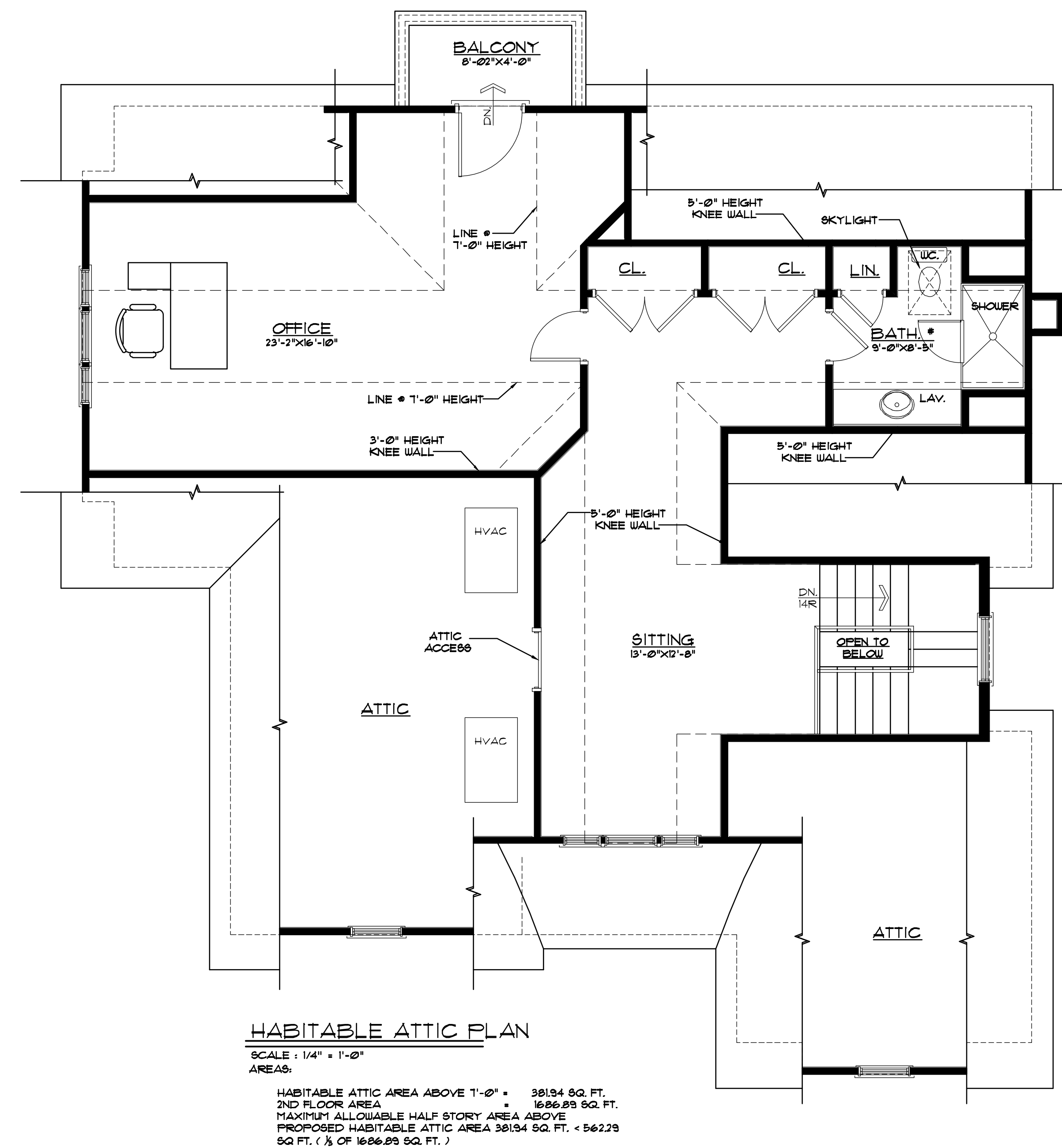
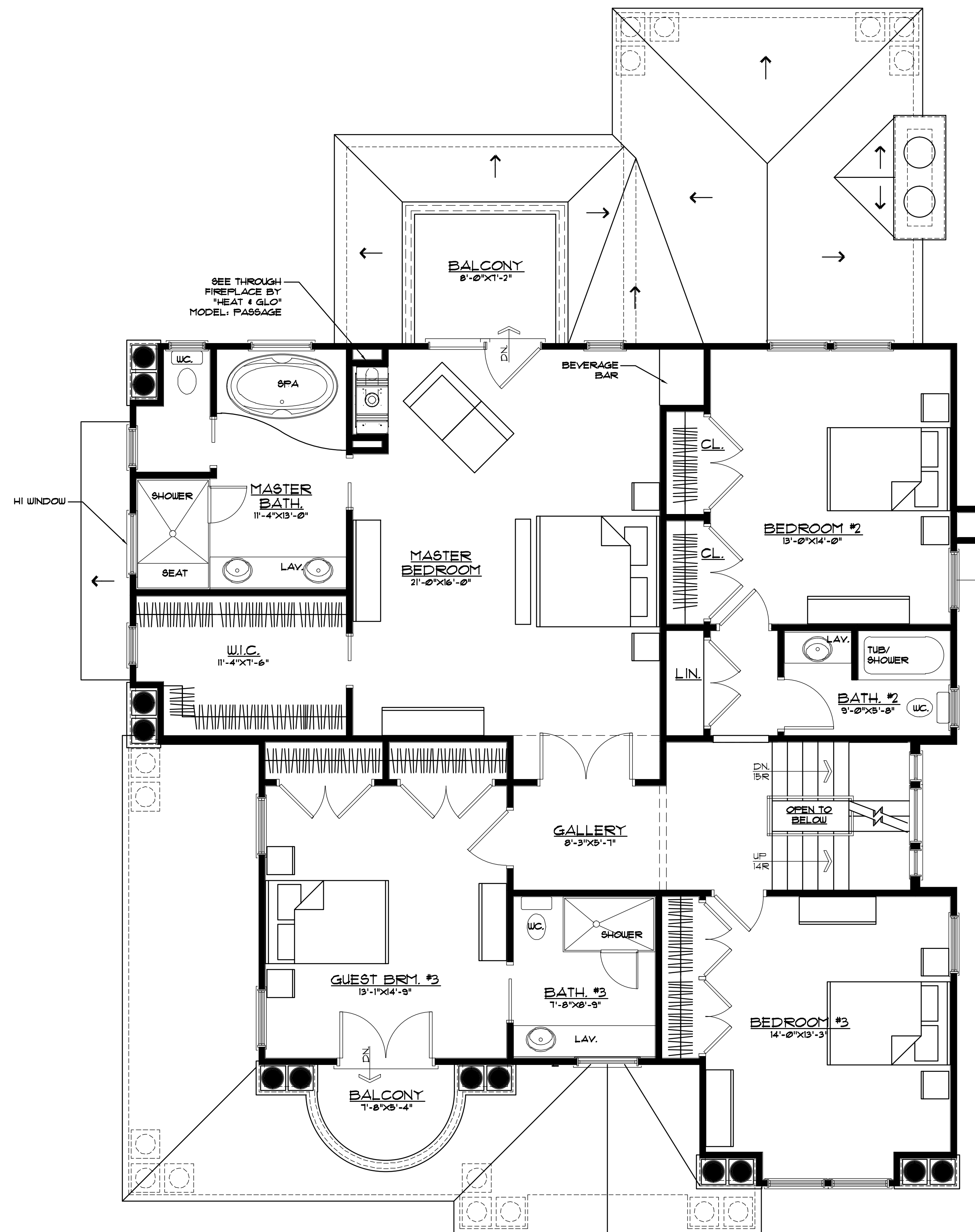
NEW RESIDENCE

[illegible]

Aquatecture Associates Incorporated expressly reserves its common law copyright and other property rights in these plans. These documents are not to be reproduced, changed or copied in any form or manner whatsoever nor are they to be assigned to a third party without first obtaining the expressed written permission of Aquatecture Associates Incorporated.

DATE: 08/28/15
PROJECT # 15.46 C

2 OF 3



☐ GREGORY L. COX RA
NJ AI09000 NY 016361-1

☐ JOHN C. AMELCHENKO RA
NJ AI10380

AQUATECTURE
ASSOCIATES INCORPORATED
ARCHITECTS • PLANNERS
421 RIVER AVENUE • POINT PLEASANT BEACH • NEW JERSEY 08742
VOICE: 732-295-3692 • FAX: 732-892-8095 • WWW.AQUATECTURE.COM

UNDESIRABLE MEN

[illegible]

© Aquatecture Associates Incorporated
 expressly reserves its common law copyright
 and other property rights in these plans.
 These documents are not to be reproduced,
 changed or copied in any form or manner
 whatsoever nor are they to be assigned to a
 third party without first obtaining the
 expressed written permission of Aquatecture
 Associates Incorporated.

DATE: 08/28/15
PROJECT # 15.46 C

$$\Delta = 2$$

3 OF 3